

# NEW WORLD SCREWWORM A THREAT TO ANIMALS & HUMANS

## WHAT IS NEW WORLD SCREWWORM

New World Screwworm (*Cochliomyia hominivorax*) is a parasitic fly of warm-blooded animals. It is not currently found in the U.S., but it has been pushing northward from Central America and is now present in Mexico. The larvae live, feed, and burrow in living flesh, which can cause devastating damage and welfare concerns for infected animals or humans.

### LIFE CYCLE

- ◆ Eggs laid in an open wound, hatched within a **few hours**
- ◆ Larvae burrow into the flesh, feeding and causing further damage for about a **week**
- ◆ Mature larvae fall off the host, burrow into the ground, and pupate for about a **week**
- ◆ The adult fly emerges from the ground, where they breed and lay their eggs in an open wound of a **warm blooded animal**
- ◆ The adult female may lay up to **3,000** eggs during her 10 to 30 day lifespan

### IDENTIFYING SCREWWORM FLIES

- ◆ **About the size of a common housefly**
- ◆ **Orange eyes**
- ◆ **Metallic blue or green body**
- ◆ **Three dark stripes along their back**

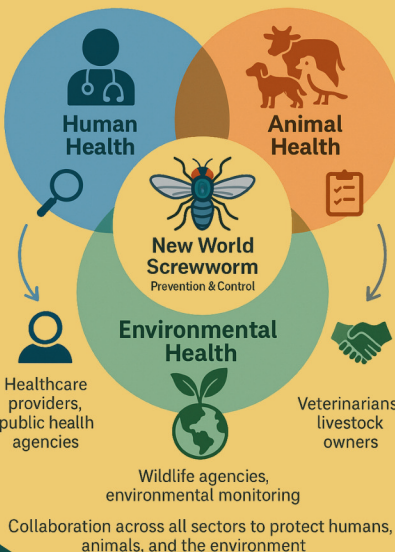


Is a threat to **livestock, pets, wild animals, and humans**

If unnoticed or left untreated, a wound site infected with screwworm larvae has the **potential to kill the host**

**Wounds** as small as tick bites have the **potential to attract** screwworm flies

## ONE HEALTH & THE NWS



It can be hard to tell the difference between this fly and other common flies such as the **house fly** and the **blow fly**

The most common way to tell the difference is based on the offspring (**maggot**) **behavior** and **location** in a wound

### HOW DOES NWS IMPACT OUR LIVESTOCK AND PETS?

- Can affect both **mammals & birds**
- After eggs are laid next to open wounds or mucous membranes, the larvae will burrow into living flesh and cause extensive tissue damage, pain, and potentially death.

### SPOTTING AN INFESTATION

- Irritated behavior
- Animals biting or licking themselves outside of the ordinary
- Head shaking
- Unusual restlessness or lethargy
- Strong smell of decay
- Presence of fly larvae in wounds
- Infection in wounds

If you are concerned about NWS on your animals, contact your veterinarian **immediately**.

### AM I AT RISK? OR CAN IT AFFECT ME AND MY FAMILY?

**YES!** ⚠️

### SPOTTING AN INFESTATION

- Strong Pain
- Secondary Infection
- Presence of fly larvae in wounds
- Egg masses in or around the wound

### WHO IS HIGHER RISK?

- Recent travel to locations with NWS (such as Central America)
- Working with livestock
- The presence of /having an open sore or wound
- Vulnerable populations, including the immunocompromised, those at extremes of age, people experiencing malnutrition, and those experiencing homelessness

### WHAT CAN I DO TO HELP?

- Stay **informed!**
- Know what to look for in people, animals, and the environment (**fly presence**).
- Report suspected cases **right away!**

### HOW TO REPORT NWS

- For suspicious infections in **animals**, contact your local or state **veterinarian**.
- For **human health** concerns, contact your local **physician** or **public health department**
- **Catching this fly early** will be important to eradicating it as quickly as possible.